



NCWHL

General Membership Meeting

February 2, 2008



Agenda

11:00 – 11:05	President's Welcome
11:05 – 11:10	2007 Goals Recap/Accomplishments
11:10 – 11:15	2008 Goals & Upcoming Events
11:15 – 11:20	Vice President's Report
11:20 – 11:30	Treasurer's Report
11:30 – 11:40	Appendix
11:40 – 11:50	Elections
11:50 – 12:00	Questions and Answers
12:00 – 12:15	Raffle



2007 NCWHL Goals - Recap

- Increase Player Registration
 - Give Hockey a Try Days – Winter & Summer (25% of attendees registered for the league)
 - Record registration in Summer 2007
- Maintain Value
 - Remain best league value by reducing costs, accepting donations, and implementing programs with little or no cost to league
- Enhance League Member Experience
 - Services
 - Continued USA Hockey Registration On-line
 - Active.com Registration System live as of Winter 2007
 - Huge time saver for Treasurer for payment consolidation; on-line payments
 - Easy online reporting for placements and USAH
 - Implemented NCWHL Assistance Fund
- Non-Profit Tax Exempt Incorporation is complete
 - Finally in maintenance mode, we only have to file yearly taxes and 1099s
- Elected Sharyn Efimoff as Treasurer(woohoo)



Representation at USAH Women's Nationals 2007

- Women's A,B, & C Divisions – 3/23/07 – 3/25/07
- Girls 12, 14, 16, & 19 Divisions – 3/29/07 – 4/1/07
- **24 Current (Registered 2007) & 19 Former NCWHLers (43 Total)**



- This ad appeared in the official program

An advertisement for the 2007 USA Hockey Girls' & Women's National Championships. The background is a dark, teal-tinted image of a hockey game. In the top right corner, the website 'ncwhl.com' is displayed in white on a yellow background. The NCWHL logo is in the top left. The main text reads: 'Best wishes to the NCWHL players participating in the 2007 USA Hockey Girls' & Women's National Championships'. At the bottom left, it says 'GIVE HOCKEY A TRY!' in yellow. At the bottom right, it says 'Northern California Women's Hockey League' followed by 'Northern California's non-checking, recreational hockey for women Ages 13 and up • Summer & Winter Seasons • All Levels Welcome' and 'For more information contact ncwhl@yahoo.com'.



2007 NCWHL Changes

Minimum Age Limit Raised to 18 yrs old.

Summer 2007 Season

- U18 players (10) temporarily suspended due to USAH insurance concerns.
- USAH enforces Background Screening for adults in contact with U18 players. Entire league must be screened at \$21 per player.
- U18 players reinstated with Screening extension for remainder of season.

Winter 2007 Season

- To comply with USAH guidelines, NCWHL Board raises age limit to 18.
- Board is currently working with CAHA to amend the rules for Women's/Girls sector with the proposal of a parental waiver.
- Results are pending.



2008 Goals & Upcoming Events

- GHATD 2/16/2008
- Clinics – TBD
- USAH Regionals – San Jose, CA (2/28 – 3/2)
- 15th year anniversary celebration
- Launch new NCWHL web site





New NCWHL Web Site Demo

[Registration](#) • [Evaluations](#) • [Divisions](#) • [Schedule](#) • [Stats](#) • [NCWHL History](#)
[GHATD](#) • [Rinks](#) • [NCWHL Store](#) • [Library](#) • [FAQs](#) • [Contacts](#)



NCWHL

Northern California Women's Hockey League

IN THE NEWS

- 11/04/07 [Winter 2007 Registration is CLOSED!](#)
09/27/07 [Winter 2007 Schedule](#)
[\[HTML\]](#) [\[Excel\]](#)
09/4/07 [GHATD Photo - August 2007](#)

Ice Slot Days/Times/Locations

Friday 9:00pm Fremont
Sunday 4:15pm Fremont
Sunday 5:45pm Fremont
Sunday 5:15pm Belmont
Sunday 6:45pm Belmont
Tuesday 8:15pm Belmont

New to hockey? Click [here](#) for the what and where of hockey gear.

Welcome to the Northern California Women's Hockey League, NCWHL. Founded in 1993, the NCWHL is a non-checking, recreational women's ice hockey league with the following objectives:

- To provide women of all abilities a place to play ice hockey with and against other women.
- To promote women's ice hockey in the San Francisco Bay Area.
- To promote good sportsmanship.

For more information about the NCWHL, please visit our [History](#) page.

Please contact the NCWHL at ncwhl@yahoo.com

 [NCWHL Merchandise](#)

NCWHL [Merchandise](#) is here!

[NCWHL Volunteers](#)

President

[Bridget Teodoro](#)

Vice President

[Marcia Garcia](#)

Treasurer

[Elise Gratton](#)

Secretary

[Beth Littleton](#)

Division Coordinators

Green, [Marina Coleridge](#)

Red, [Nora Grasham](#)

Maroon, [Lorel Hiramoto](#)

Blue, [Charlotte Shimada](#)

[Volunteer Coordinators](#)

Copyright © 2007 NCWHL. All rights reserved.



Vice President's Report

- **Award Coordinator – Chris Collaco**
 - 2007 Awards changed from T-Shirts to Towels
- **Coach Coordinator – Katherine Yoshii**
- **Goalie Coordinator – Cara Weitzsacker**
- **Photo Coordinator – Wendy Young**
- **Party Coordinator – Susi Guzsella**
 - New coordinator for 2008: Gwenn Rauchle
- **Placement Coordinator – Open**
 - Summer Evaluations: 75 Skaters evaluated, 47 volunteers, over 20 hopefuls requested feedback
 - Winter Evaluations: 44 skater evaluated
 - New Coordinator For 2008: Open
- **Recruitment Coordinator – Malinda Charter**
 - Next GHATD February 16, 2008
 - Summer GHATD 8/12/2007– 24 skaters, 1 goalie, 25% NCHWL registered in Green/Red
- **Referee Coordinator – JJ Nakaso**
 - Referee training coordinator: Mary Owen
 - Pilot program through March
- **Scorekeeper Coordinator – Christina Wilson**
 - New Coordinator for 2008: Meredith Smith-Shyy



Welcome New Treasurer

Sharyn Efimoff was elected in October 2007 and has been transitioning into the treasurer role since November 2007.

Sharyn has a background in financial analysis, experience as treasurer for a college association and most importantly, she brings lots of energy to the NCWHL board!



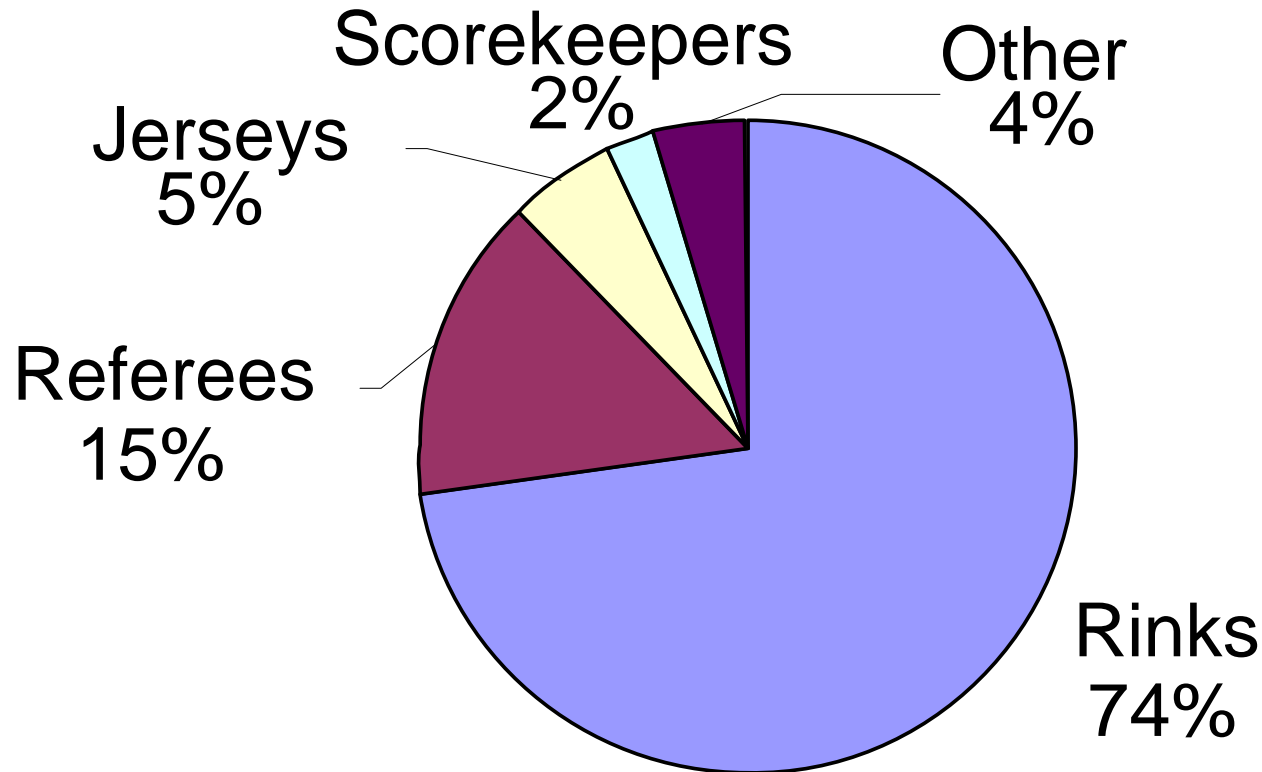
Treasurer's Report

	Winter 2006	Summer 2007
Income	\$69,920	\$78,024
Expenses	(\$68,513)	(\$70,657)
Profit/(Loss)	\$1,406	\$7,369

*These statements have not been verified or audited.



Expense Breakdown



*These statements have not been verified or audited.



Non Profit Incorporation

Mutual-benefit corporation with State of California and Attorney General (501(c)(4))

- Not a charity
- Donations are NOT tax-deductible.
- Dec 07: Filed taxes for FY2006 (9/1/05-8/31/06)
- Jan 08: Filed 1099s for independent contractors for 2007



Thank You

Bobbi Lynn Jones

**Attorney and former
NCWHL player!**

Pro-bono help with the
Incorporation process

Mary Blythe

**CPA with Richard T
Dwyer & Company**

For going above and beyond the
call of duty with our tax-exempt
application



Appendix

- Definitions of non-profit terms
- Registration Fee Balancing Act
- Player/Goalie Registration Trend
- How the NCWHL Compares to Other Leagues
- NCWHL Organization Chart



Definitions: Non-Profit Organization

- **501(c)(3)**: non-profit, tax-exempt organization that fosters national or international amateur sports competition. Donations are tax-deductible.
- **501(c)(4)**: non-profit, tax-exempt organization operated exclusively for recreational purposes. Donations are NOT tax-deductible.
- **Articles of Incorporation**: A document filed with the Secretary of State or other appropriate state office by persons establishing a corporation. This is the first legal step in forming a nonprofit corporation.
- **Bylaws**: The document that contains the ground rules by which a company is run. Bylaws normally establish such matters as the titles and duties of executive officers, the timing and procedures for board meetings, and the manner for conducting the annual member's meeting.



Registration Fees Balancing Act

Good News:

- Steep increase in member registration
- Balanced total # slots Winter/Summer

Bad News:

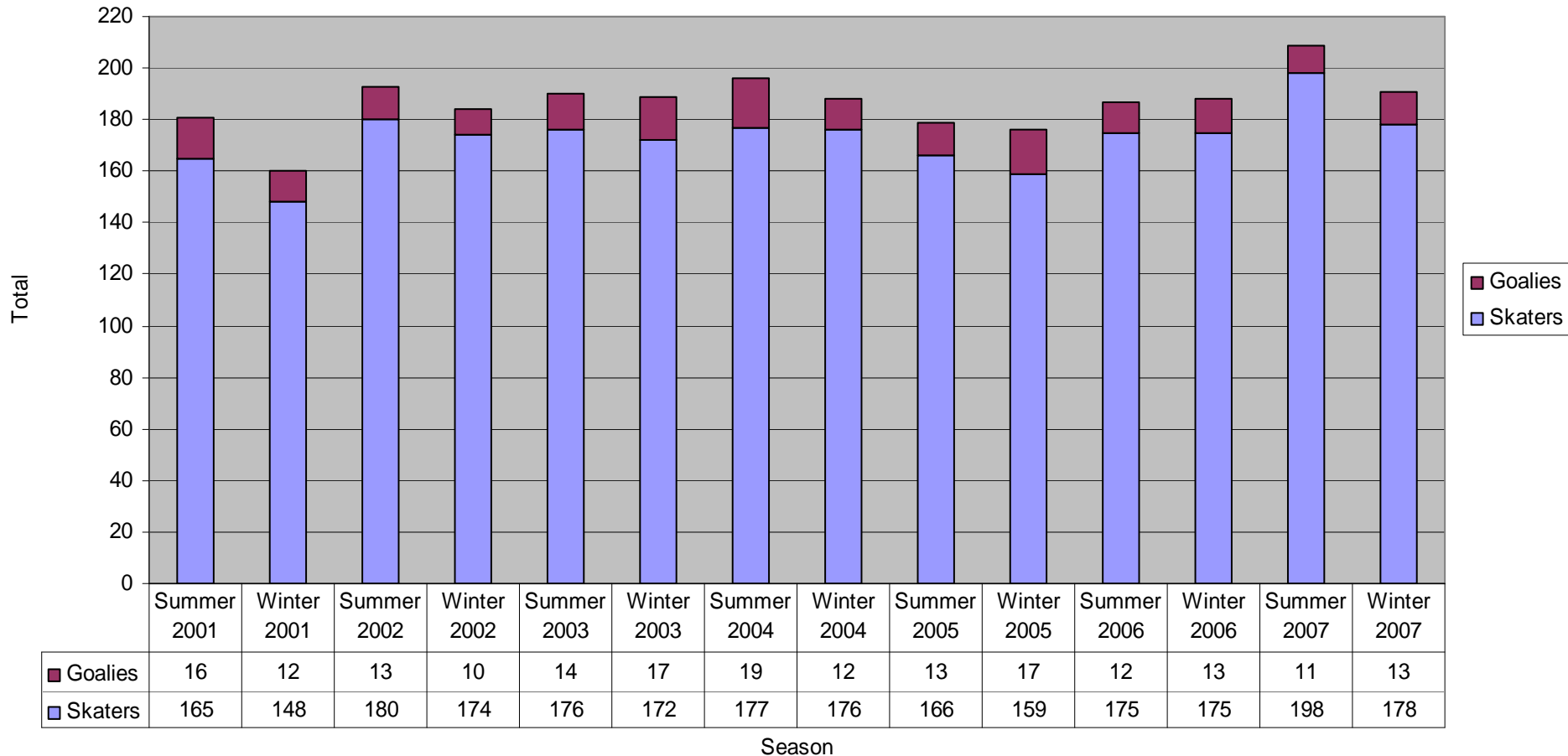
- Fremont keeps increasing costs per slot
- Future registration hard to predict





Player/Goalie Registration Trend

Total Players - Growth





Comparison of Bay Area Adult Hockey Leagues

As of January 2008

League	Rink(s)	# of Seasons / Year	Total Cost Per Season	# of games	Cost Per Ice Slot
Northern California Women's Hockey League (NCWHL)	Belmont & Fremont	2	\$400	21	\$19.76
Logitech Adult Hockey League - Winter Season	San Jose	2	\$546*	(Winter) 24 + playoffs	\$22.75
Oakland Ice Center Adult Hockey League	Oakland Ice Center	2	\$467*	20 + playoffs	\$23.35
San Francisco Adult Hockey League	Yerba Buena	2	\$400*	15 + playoffs	\$26.67
Pacific Hockey Association (PHA)	Cupertino & San Mateo	2	\$475*	17 + playoffs	\$27.94
Redwood City Ice Oasis	Redwood City	2	\$815**	24 (including playoffs)	\$33.96

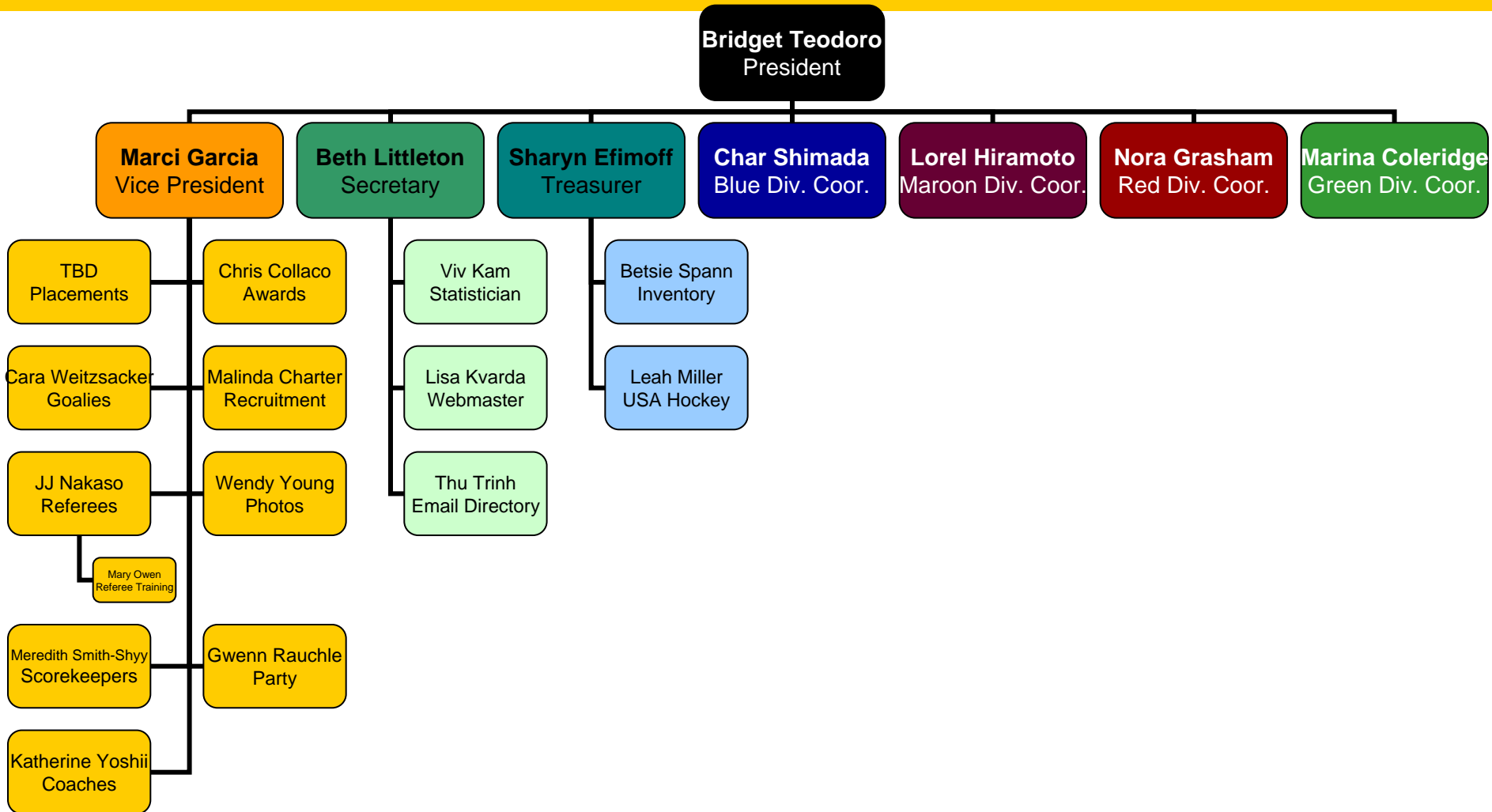
Notes:

* Based on teams of 15 players, even though teams can consist of more players.

** Includes pro-rated annual fees.



NCWHL Organization





Elections

President

- Nominees = Bridget Teodoro

Vice President

- Nominees = Marci Garcia

Secretary

- Nominees = Beth Littleton

Treasurer

- Nominees = Sharyn Efimoff

Blue Division Coordinator

- Nominees = Charlotte Shimada

Maroon Division Coordinator

- Nominees = Lorel Hiramoto

Red Division Coordinator

- Nominees = Nora Grasham

Green Division Coordinator

- Nominees = Marina Coleridge



Questions and Answers

(hopefully)





Raffle Door Prizes

- ****Please support the vendors who offer discounts to the NCWHL & provided the following raffle items:**
- Skating Passes
- San Jose Sharks License Plate Frame
- Bauer T-shirt
- San Jose Sharks Hat
- Easton Stick Bag
- Itech Bag
- Itech Gloves
- Refund of 1/2 of the NCWHL League fees for Summer 2008 (qty = 2)





ROOM RESERVED

This room is reserved for:

NCWHL

General

Membership

Meeting

2/2/08 @ 11:00 a.m.